

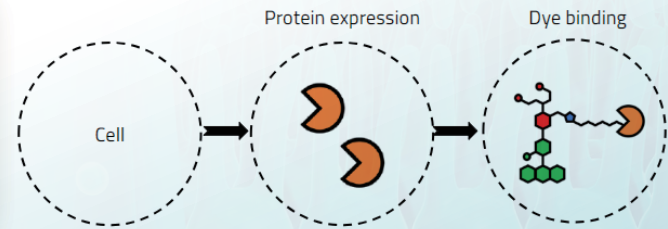
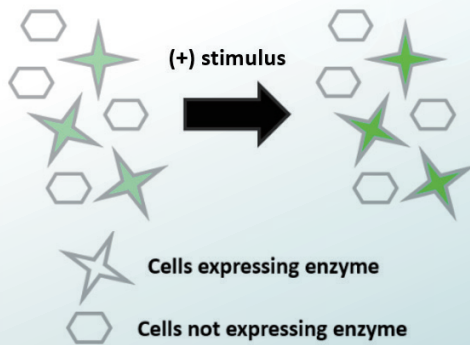
# Targetable Ion Indicators

Advanced Solutions for Localized Ion Channel Assays

## How they work

### Hybrid Sensors

- ◀ Cells Engineered to express Halotag®
- ◀ Our ion indicators bind to Halotag®, trapping them within target cells or organelles

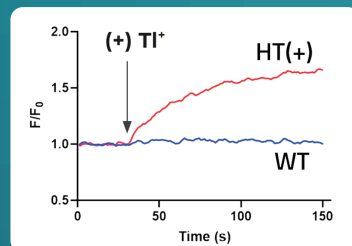


### Advantages

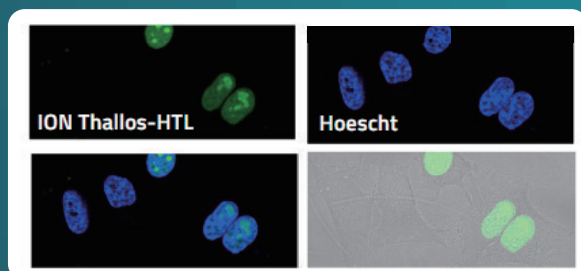
- ◀ Halotag® not expressed endogenously
- ◀ Indicators are superior to protein sensors
- ◀ Dyes are not always ON
- ◀ Indicator is localized to where Halotag® is
- ◀ Enabling you to generate data from cells or organelles you want to study

### ION Thallos-HTL

High throughput screening compatible

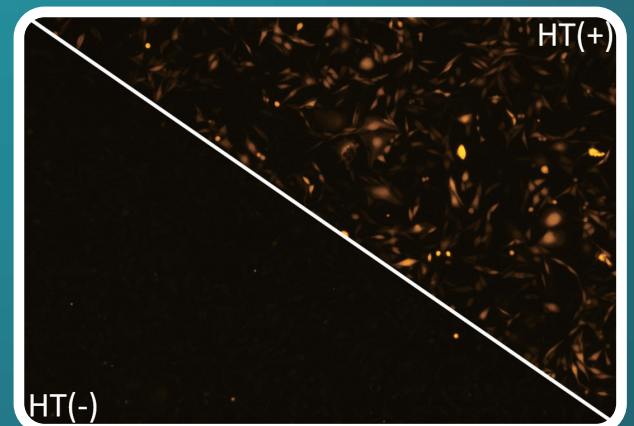


Intracellular localization ready



### BAPTA JF™ 549-HTL

Ability to target individual cells within a mixed-cell population



JF™ is a trademark owned by the Howard Hughes Medical Institute.