

ION Vital - MitoVolt

Kit Contents (Cat # 5100)				
Label	Name	Size	Quantity	Storage*
Reagent A	100X JC-10 in DMSO (~3.5 mM)	250 µL Vial	1	-20° C
Reagent B	Dye Loading Buffer	25 mL Bottle	1	4° C
Reagent C	Masking Solution	25 mL Bottle	1	4° C

**Dye Loading Buffer and Masking Solution reagents are shipped frozen but may be stored at refrigerated temperatures upon receipt. 100X JC-10 solution should always be stored frozen. The number of freeze-thaw cycles that JC-10 is subjected to should be minimized to preserve dye effectiveness.*

Description

ION Vital - MitoVolt assay kit is the ideal solution for detecting changes in mitochondrial membrane potential due to cell apoptosis or other stress-inducing phenomena. ION Vital - MitoVolt is compatible with fluorescence microscopy, flow cytometry, and plate reader applications.

JC-10 is a mitochondrial membrane potential probe. It possesses superior aqueous solubility compared to its better known analogue, JC-1. At low concentrations, JC-10 is monomeric and emits a green fluorescence. JC-10 accumulates in healthy mitochondria, forming J-aggregates that exhibit an orange fluorescence. Mitochondrial depolarization, a key marker of cellular apoptosis, results in a loss of JC-10 accumulation and a reversal to its monomeric form. This reversible behavior of JC-10 allows for ratiometric analysis of mitochondrial membrane potential, where a shift from orange (Ex/Em: 540nm/590nm) to green fluorescence (Ex/Em: 490nm/525nm) is indicative of compromised mitochondria.

ION Vital–MitoVolt can be used to monitor and/or visualize mitochondrial membrane potential as a static endpoint or over time.

When following our protocol, ION Vital–MitoVolt provides enough reagents to make 25 mL of working solution, enough for five 96-well plates or 500 flow cytometry samples. The actual number of assays will vary according to optimal dye concentrations and assay volumes for your application.

Laboratory Procedures

Getting Started

Before you begin, make sure that you have all the additional reagents and materials you will need for the successful completion of your experiment. Although the ION Vital - MitoVolt contains the key reagents you will need to prepare your cells for analysis, your experiments will likely require other reagents which are not included in your ION Vital - MitoVolt package. Notably, compounds to be tested, buffers and solvents for the dissolution of these compounds, or reagents necessary for cell culture are not included.

In addition to reagents, a microscope, fluorescence plate reader, or flow cytometer that is capable of providing an excitation source at ~ 490 nm and ~540 nm and measuring emission at ~525 nm and ~590 nm is required.

General Considerations

1. Optimal dye concentration and loading time will vary depending on cell type and application. Recommended dye loading concentrations range between 1 μ M and 15 μ M.
2. ION Vital - MitoVolt is compatible with kinetic imaging and analysis for up to 8 hrs after JC-10 addition under the appropriate experimental conditions.
3. There are a number of compounds that can be used as positive controls for our MitoVolt assay, including FCCP¹, CCCP², campothecin, and staurosporine. An effective FCCP¹ and CCCP² concentration is 2–5 μ M for ~30 min prior to dye addition for most cell types. Campothecin and staurosporine require longer treatment times (3-6 hrs).
4. Cytotoxic events that do not cause mitochondrial membrane depolarization are not detectable using this kit.

Plate Reader Assay

1. Seed cells in a 96-well plate and treat with test compounds of your choosing prior to addition of dye loading solution (step 4). Target a final volume of 100 μ L/well (80 μ L of medium + 20 μ L of 5X test compound). Removal of serum-containing medium is not required. However, the user should take into consideration that the potency of some test compounds may be dramatically affected by the presence of serum. If the presence of serum is not desired, serum-containing medium can be replaced by an equal volume of a buffered isotonic saline solution such as 1X HEPES buffered Hank's Balanced Salt Solution (1X HHBSS, available from ION Biosciences, see Table 1).
2. Remove all reagents from freezer (or refrigerator) and allow to warm to room temperature. Protect from direct light.
3. Prepare dye loading solution by adding 50 μ L of 100X JC-10 (Reagent A) to 5 mL of Dye Loading Buffer (Reagent B). Vortex briefly to mix. Solution should transition from pink to near-colorless when homogeneously dissolved.
4. Add dye loading solution prepared in step 3 directly to cells. We recommend 50 μ L/well for a 96-well plate.
5. Incubate cells for 30 - 60 min at 37 °C. Protect from direct light.
6. Add Masking Solution (Reagent C) directly to wells containing cells and dye loading solution. We recommend 50 μ L/well for a 96-well plate; however, the volume of masking solution added should be optimized for your application. Do not remove dye loading solution from wells.
7. Measure fluorescence using a microplate reader for ratiometric analysis. To quantify JC-10 monomer fluorescence, use Ex/Em ~490 nm/525 nm or instrument settings appropriate for fluorescein. To quantify JC-10 aggregate fluorescence, use Ex/Em ~540 nm/590 nm or Texas Red® instrument settings.

Note: Kinetic monitoring of fluorescence ratios can continue for up to 8 hours after dye addition. We recommend read intervals >5 minutes to prevent photobleaching caused by overexposure to the excitation source.

Microscopy Assay

Note: It is possible to load JC-10 dye prior to the addition of test compounds for real-time visualization of apoptosis. However, the following protocol assumes cells have been treated with test compounds prior to Step 1.

1. Remove all reagents from freezer (or refrigerator) and allow to warm to room temperature. Protect from direct light.
2. Prepare dye loading solution by adding 50 μ L of 100X JC-10 (Reagent A) to 5 mL of Dye Loading Buffer (Reagent B). Vortex briefly to mix. Solution should transition from pink to near-colorless when homogeneously dissolved.
3. Add dye loading solution prepared in step 2 directly to cells. Volume needed will vary depending on well size. We recommend a dilution of 1 part working solution to 2 parts medium. For example, add 50 μ L of dye loading solution to a well containing 100 μ L of medium.

4. Incubate cells for 30 - 60 min at 37 °C. Protect from light.
5. Add Masking Solution (Reagent C) directly to cells. Volume needed will vary depending on well size. We recommend a dilution of 1 part masking buffer to 3 parts volume in well. For example, add 50 µL of Masking Solution to a well containing a total volume of 150 µL. Do not remove dye loading solution from wells.
6. Image cells using a fluorescence microscope. JC-10 monomers can be visualized with standard FITC or GFP filters, and JC-10 aggregate fluorescence can be viewed using Texas Red® or Propidium Iodide filters. An optional imaging setup to capture the monomer and aggregate fluorescence simultaneously uses an excitation filter ~490 nm paired with a long pass emission filter > 530 nm.

Note: Time-lapse imaging of cells can continue for up to 8 hours after dye addition. We recommend imaging intervals >5 minutes to minimize photobleaching.

Flow Cytometry Assay

1. Remove all reagents from freezer and allow to warm to room temperature. Protect from light.
2. Prepare dye loading solution by adding 50 µL of 100X JC-10 (Reagent A) to 5 mL of Dye Loading Buffer (Reagent B). Vortex briefly to mix. Solution should transition from pink to near-colorless when homogeneously dissolved.
3. Collect and suspend cells exposed to test reagents in 100 µL of 1X HHBSS (available from ION Biosciences, see Table 1), or equivalent buffer, at $1-5 \times 10^5$ cells/tube.
4. Add dye loading solution prepared in step 2 directly to tubes. We recommend adding 50 µL/tube.
5. Incubate cells for 15 - 30 min at room temperature or 37 °C. Protect from direct light.
6. Analyze cells using a flow cytometer. To detect cells with healthy mitochondria, use phycoerythrin (PE) settings. To detect cells with compromised mitochondria, use FITC settings. Use positive controls (e.g. FCCP¹-treated cells) to perform compensation corrections.

Example Results

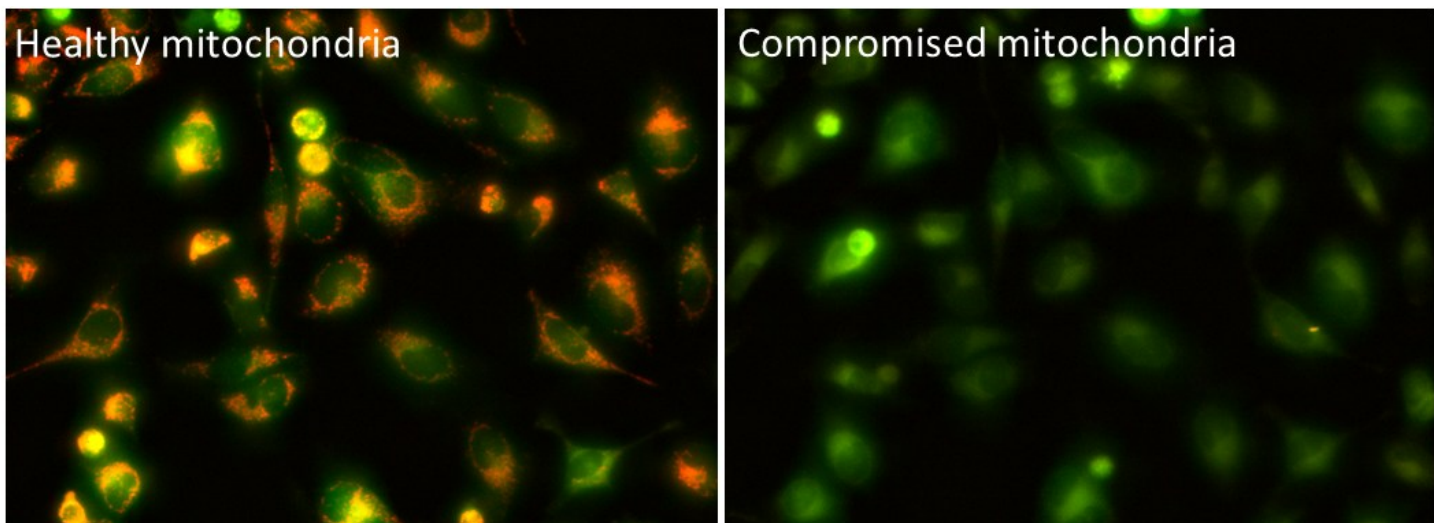


Figure 1. Fluorescence image overlays of HeLa cells stained using ION Vital - MitoVolt assay kit acquired before (left) and after (right) the addition of CCCP², a potent mitochondrial decoupling reagent. Images were acquired using a 20X objective with GFP (green JC-10 monomer) and propidium iodide (orange JC-10 aggregate for healthy mitochondria) filter cubes.

Laboratory Procedures - Footnotes

- ¹ FCCP – Carbonyl cyanide 4-phenylhydrazone, CAS No. 370-86-5, a mitochondrial oxidative phosphorylation uncoupler
- ² CCCP – Carbonyl cyanide m-chlorophenylhydrazone, CAS No. 555-60-2, a mitochondrial oxidative phosphorylation uncoupler

Additional Information

Additional dye indicator and buffer reagents can be purchased either directly from our website or by contacting our Sales Department. Custom and bulk sizes are also available. Contact Sales for more information.

Table 1	Additional Reagents	Available Sizes	
Kit Label	Name	Size	Catalog #
Reagent A	JC-10 in DMSO (~3.5 mM)	50 µL x 5 Vials	5110
Reagent B	MitoVolt Dye-Load Solution	Not a Regular Catalog Item Contact Sales to Purchase	
Reagent C	MitoVolt Masking Solution	Not a Regular Catalog Item Contact Sales to Purchase	
Plate Reader Step 1 Flow Cytometry Step 3	1X HEPES-Buffered Hanks Balanced Salt Solution (1X HHBSS)	100 mL Bottle	7001